

INTERIOR COLOUR
COMBINATIONS



'Colours are the smiles of Nature' – Leigh Hunt

Colours give the essential character to any space, be it a living room or kitchen, bedroom or a lounge. Colours help to define a space before any other element of décor is chosen. They can also make a space appear large or small, relaxed or energetic - again hinting at what activity it invites the most. Long known for their power to influence moods and emotions, colours also help in making us feel healthy and energetic every day.



In this first of its kind guide from Berger Paints, we have illustrated how you can achieve striking effects in every room by using the right combinations. Here's where you'll find 7 unique combinations for each colour family to choose from. You can compare and see how the same room setting looks distinctly different with deeper, medium or lighter tones of the same colour family.



A total of 70 colour combinations are waiting to be discovered by you in these pages.

Wishing you a journey of fresh discoveries. Happy painting!

Choosing colours made easy



PINK



ORANGE



RED



YELLOW



YELLOW - GREEN



VIOLET



BLUE



BLUE - GREEN



BROWN



GREY



"The very pink
of perfection."

Oliver Goldsmith, Playwright





Manchester Mood
8478



Fine Wine
8109

Bare Necessity DW137



LIGHT



Devon Dawn
8060



Berry Good
8107

Devon Dawn 8060

MEDIUM



Glimpse of Spring
7723



Euphoric Rose
8135

Glimpse of Spring 7723



Fair Ivory
8587



Morningside
8059

Fair Ivory 8587



Citrus Sherbet
7988



Wild Heather
8087

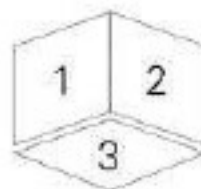
Cottage White 8516



Pink

Pink is the soft side of Red. Pink can be subtle, subdued and refined or lively, hot and trendy. It's most accepted as unconditional love – nurturing, comforting and always there.

How to use these combinations



The colours 1 and 2 form the basic 2-colour combination as shown in the pictures. These colours are recommended for adjacent surfaces like walls, beams, columns or niches. The 3rd colour is recommended for the rest of the room and/or the ceiling.

"It's amazing how it cheers
one to shred oranges."

D.H. Lawrence, Novelist





Taupe View
8769



Light My Fire
AC114

Amberling OW125

LIGHT



Amber Moon
7985



Baja Beach
8497

Christi Cream 7980

MEDIUM



Moroccan Spice
7999



Thunder Bay
7368

Agad Parchment 8523



Thistle Down
8004



Bashful Beige
8002

Thistle Down 8004



Rose Queen
8102



Tangelo Anna
7971

Apricot Blush OW138

DARK



Pandoras Purple
7143



Florida Orange
7949

Proud Mary 7978



Orange Essence
8009



Glowing Ember
AC112

Apricot Blush OW138

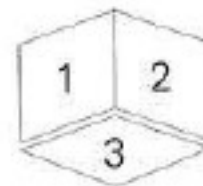


INTERIOR COLOUR
COMBINATIONS

Orange

Orange is a stimulating and energizing colour. Spicy orange can be warm and appetizing while peach tones can be welcoming and pleasing. Choose orange with any colour to bring energy and cheer in the air.

How to use these combinations

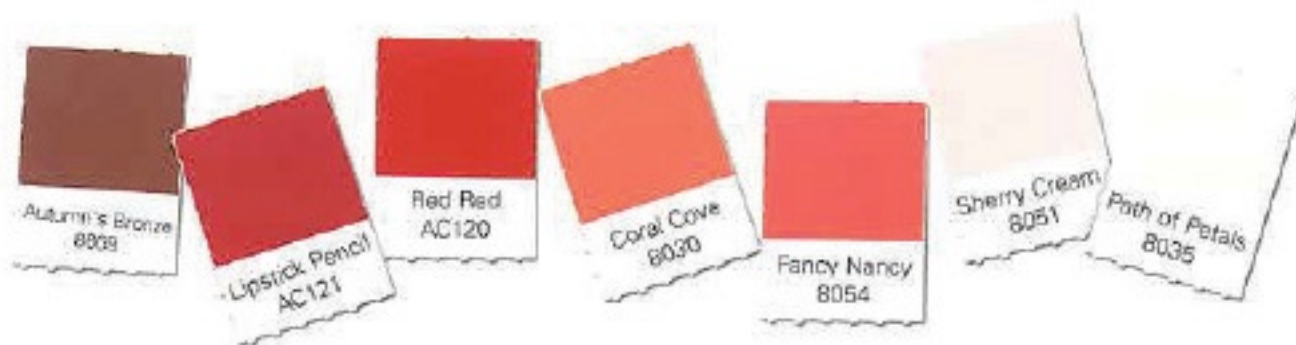


The colours 1 and 2 form the basic 2-colour combination as shown in the pictures. These colours are recommended for adjacent surfaces like walls, beams, columns or niches. The 3rd colour is recommended for the rest of the room and/or the ceiling.

The shades shown above are only a printed reference and may vary from the actual colour. Please refer the Berger Paints Colour Palette for actual shade reference.

"Red has guts...
deep, strong dramatic."

Garavani Valentino, Designer





Light Roast
8654



Red Red
AC120

Country Cotton DW104

LIGHT



Path of Petals
8035

Palace Gown
OW146

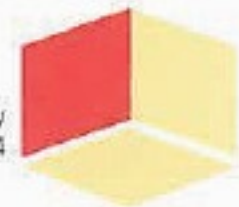
Palace Gown OW146

MEDIUM



Fancy Nancy
8054

Such a Peach
7970



Such a Peach 7970



DARK

BERGER | INTERIOR COLOUR
COMBINATIONS



Lipstick Pencil
AC121



Pale pollen
7889

Pale Ivory 7892



Sea Of Midnight
7437



Autumn's Bronze
8659

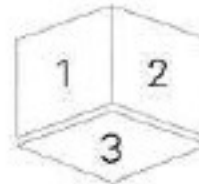
Almost Ivory OW156

Red

Red is the most powerful colour.

Rich and intense, romantic and passionate or hot and flamboyant – red can make many statements. Chosen with any colour it always adds energy and excitement. Red never goes unnoticed.

How to use these combinations



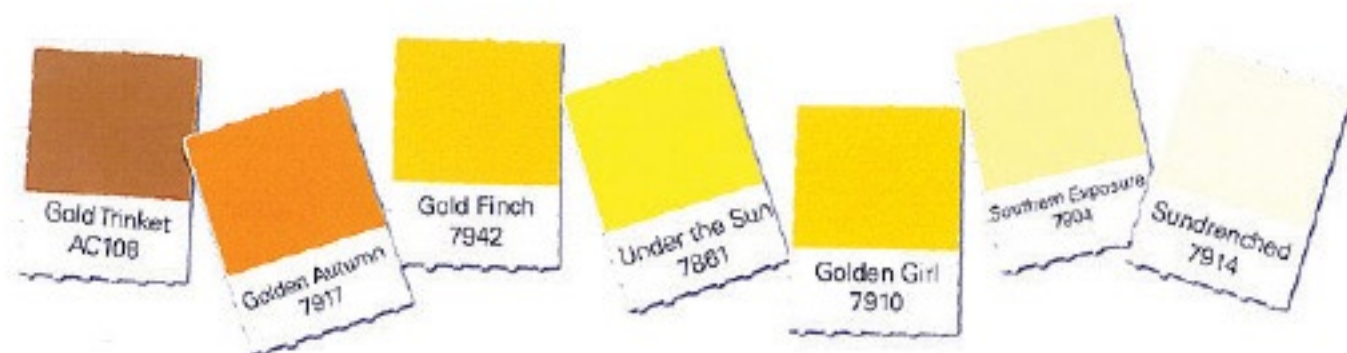
The colours 1 and 2 form the basic 2-colour combination as shown in the pictures. These colours are recommended for adjacent surfaces like walls, beams, columns or niches. The 3rd colour is recommended for the rest of the room and/or the ceiling.

The shades shown above are only a printed reference and may vary from the actual colour. Please refer the Berger Paints Colour Palette for actual shade reference.



“There are painters who transform the sun into a yellow spot, but there are others who, thanks to their art and intelligence, transform a yellow spot into the sun.”

Pablo Picasso, Painter





Golden Autumn
7917



Utopia
8752

Amazing Grace CW127

LIGHT

MEDIUM



Sundrenched
7914



Banana Cream
7850

Sundrenched 7914

Golden Girl
7910



Clean Canvas
7938

Clean Canvas 7938



Southern Exposure
7904



Firefly Flicker
7916

Firefly Flicker 7916

Gold Finch
7942



Parma
8642

Apricot Blue CW138

DARK



Gold Tinket
AC108



Tuscany Hillside
7781

Almond Sugar DW 126



Under the Sun
7861



Gilded Vision
AC110

Homemade Biscuit DW 126



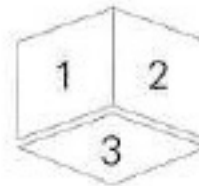
INTERIOR COLOUR
COMBINATIONS

Yellow

Yellow is the happiest colour in the spectrum associated with warmth, action and joy.

Paired with any other colour it marks the area as a 'day' space. Lighter shades are more accepted but use brighter ones for playful or graphic décors.

How to use these combinations



The colours 1 and 2 form the basic 2-colour combination as shown in the pictures. These colours are recommended for adjacent surfaces like walls, beams, columns or niches. The 3rd colour is recommended for the rest of the room and/or the ceiling.

The shades shown above are only a printed reference and may vary from the actual colour. Please refer the Berger Paints Colour Palette for actual shade reference.

“The winds will blow
their own freshness into you,
and the storms their energy,
while cares will drop off
like autumn leaves.”

John Muir, Writer





Ornamental Grass
7837



Golden Mist
8517

Cloud of Cream 8524

LIGHT

MEDIUM



Plum Proud
8219



Green Acres
7730

Plum Proud 8219

Drearry Space
7364



Italian Olive
7823

Pebble Bluff OW136



Burst of Spring
7772



Southern Sand
8780

Burst of Spring 7772

Alligator Alley
7767



Gold Gleam
7834

Gold Gleam 7834

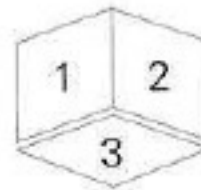


Yellow-Green

Shining like the new leaves of spring, yellow - greens give a smacking fresh citrus taste with their presence. They make for striking combinations paired with any colour. Yellow - greens always bring smiles and good cheer in the air.



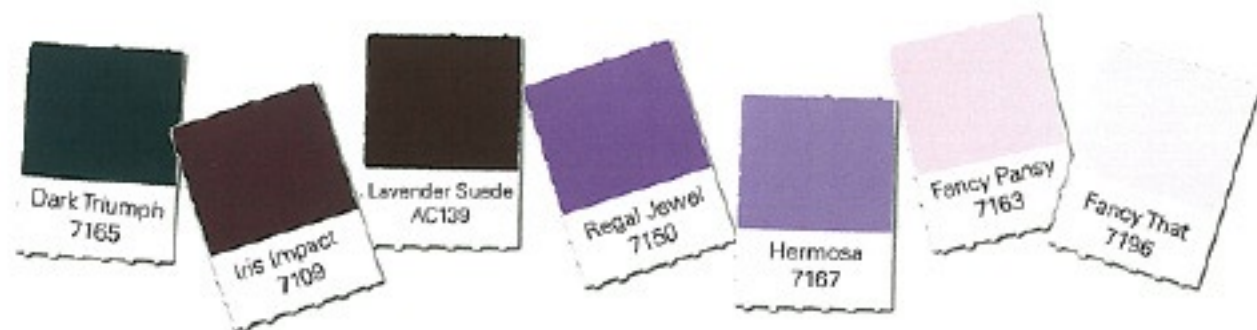
How to use these combinations



The colours 1 and 2 form the basic 2-colour combination as shown in the pictures. These colours are recommended for adjacent surfaces like walls, beams, columns or niches. The 3rd colour is recommended for the rest of the room and/or the ceiling.

"Forgiveness is the
fragrance that the
violet sheds on the
heel that has
crushed it."

Mark Twain, Writer





Soft Buckskin
8577



Lavender Suede
AC139

Whisper of White 8556

LIGHT

MEDIUM



Lilac Frost
7148



Fancy Pansy
7163

Lilac Frost 7148

Hermosa
7167



Moroccan Spice
7999

Lavender Splash 7164



Fancy That
7196



Apricot Mousse
7956

Fancy That 7196

Regal Jewel
7150



Lakeside Pine
7629

Daybreak Mood 8204



Violet

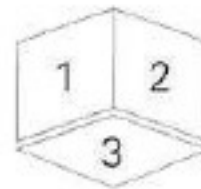
Violet is the colour of royalty.

It also has a mystical side.

Choose any shade of violet to infuse
a sense of luxury in the air.

Violet also has a meditative quality
that makes it a colour of clarity and foresight.

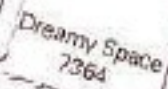
How to use these combinations



The colours 1 and 2 form the basic 2-colour combination as shown in the pictures. These colours are recommended for adjacent surfaces like walls, beams, columns or niches. The 3rd colour is recommended for the rest of the room and/or the ceiling.

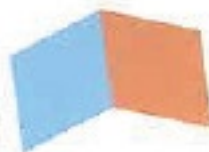
"I never get tired
of the blue sky."

Vincent Van Gogh, Painter





Lupe's Lake
7361



Sunset Mesa
8015

African Ivory 8020

LIGHT



Inner Peace
3443

Coral Beach
7969

Apple White OW106

MEDIUM



Royal Regatta
7247

Pandora's Purple
7143

Pebble Bluff OW136



Hi Ho Silver
8330

Prairie Day
7331

Apple White OW106



Dreamy Space
7364

Lupe's Lake
7361

Dreamy Space 7364

DARK



INTERIOR COLOUR
COMBINATIONS



Blue

Blue is tranquility. It's the colour of openness and optimism. It complements beautifully with a wide range of colours creating a feeling of nurturing and ease. Create a calm and relaxed feel using light to medium range blues or a regal and dignified feel using the darker blues.

Midnight Interlude
AC144



Persimmon
8029

Milk Paint CW130



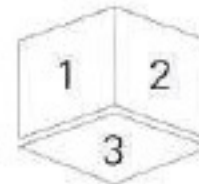
Baby Sprout
AC160



Sea of Midnight
7437

Pebble Bruff CW138

How to use these combinations:

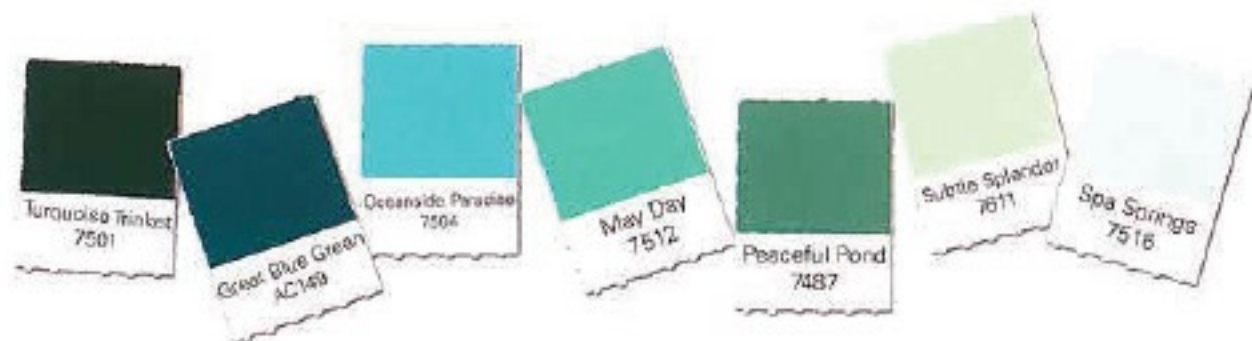


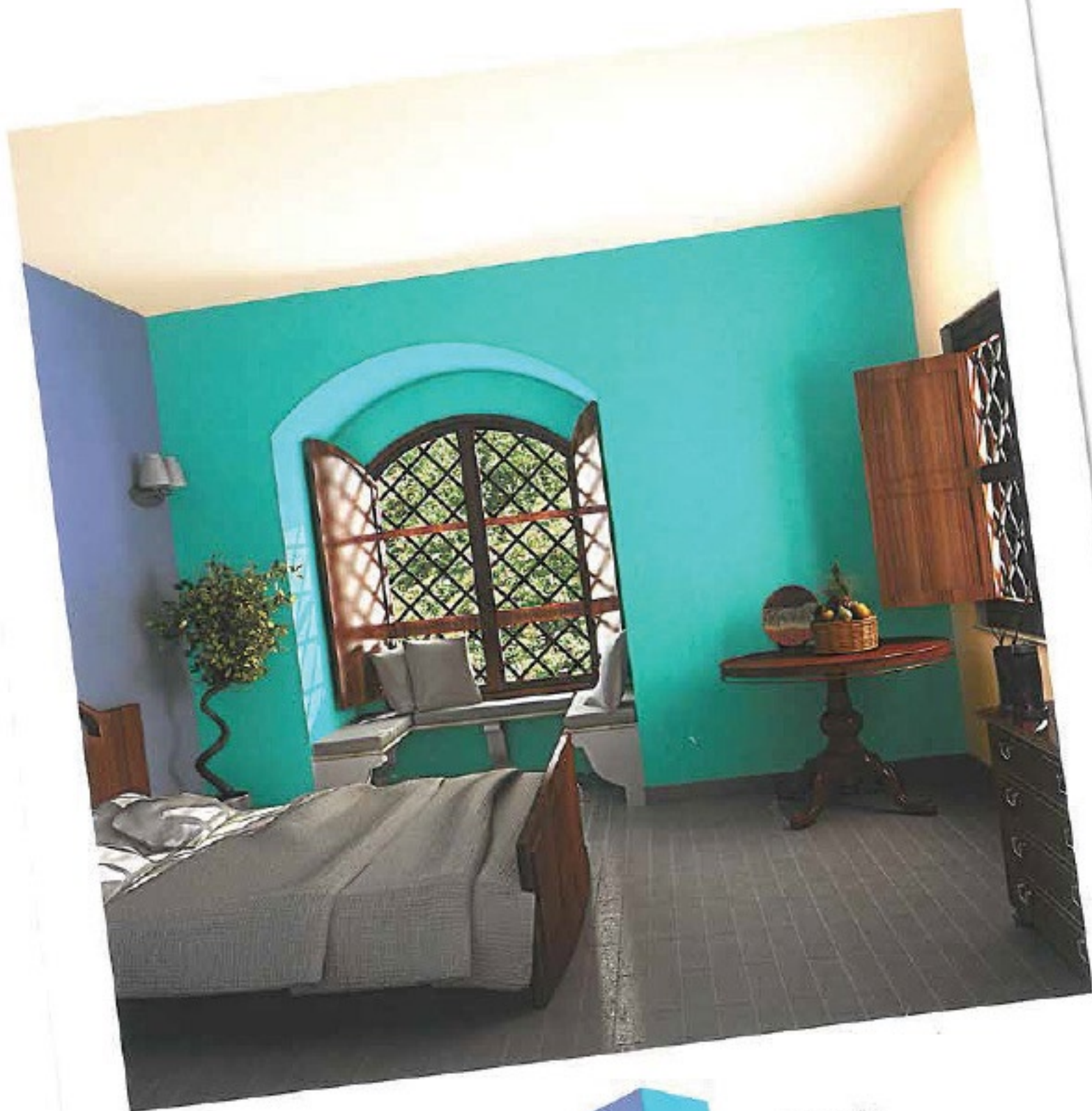
The colours 1 and 2 form the basic 2-colour combination as shown in the pictures. These colours are recommended for adjacent surfaces like walls, beams, columns or niches. The 3rd colour is recommended for the rest of the room and/or the ceiling.

The shades shown above are only a printed reference and may vary from the actual colour. Please refer the Berger Paints Colour Palette for actual shade reference.

"I love the sea's sounds
and the way
it reflects the sky.
The colours that shimmer
across its surface
are unbelievable."

John Dyer, Poet





South Port
7271



Oceanside Paradise
7504

Beige Daze OW132

LIGHT



Mohican Mist
8691



Subtle Splendor
7611

Beige Bluff 8652

MEDIUM



Heritage Hills
8554



Peaceful Pond
7487

Heritage Hills 8554



Spa Springs
7516



Spring Sonnet
7667

Spring Sonnet 7667



The Outback
7879



May Day
7512

Sprinkled with Summer 7923

DARK



INTERIOR COLOUR COMBINATIONS

Blue-Green

Blue - greens bring the cool calm waters of a tropical beach closer home. Like flowers in nature, these colour schemes enhance any setting and create a serene and stress-free feeling.



Brookside
7455



Turquoise Trinket
7501

Aurora Splendor OW117



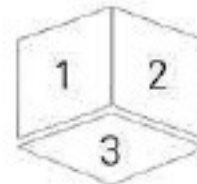
Western Pursuit
8581



Great Blue Green
AC149

Organic Cotton 8515

How to use these combinations.



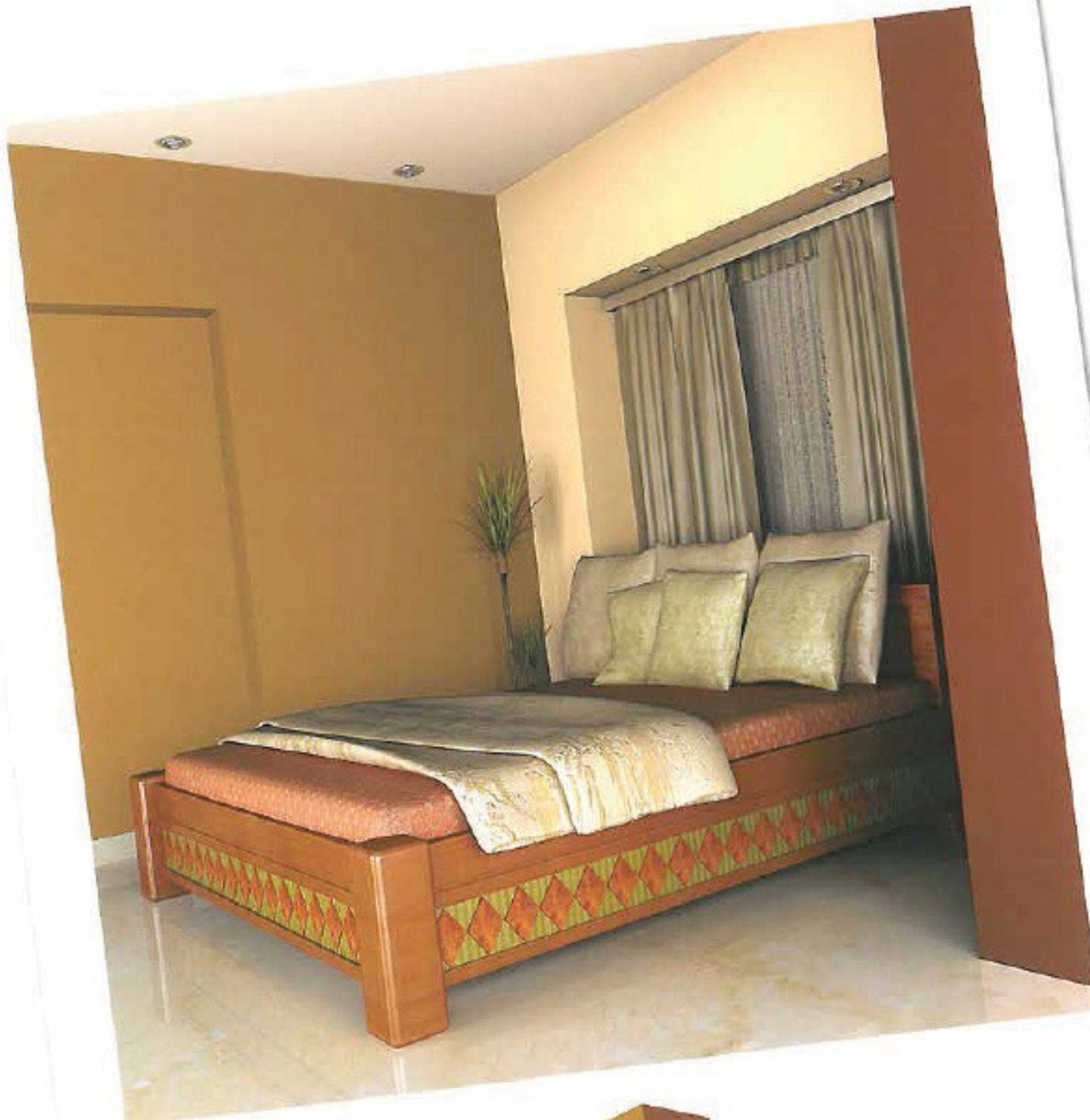
The colours 1 and 2 form the basic 2-colour combination as shown in the pictures. These colours are recommended for adjacent surfaces like walls, beams, columns or niches. The 3rd colour is recommended for the rest of the room and/or the ceiling.

The shades shown above are only a printed reference and may vary from the actual colour. Please refer the Berger Paints Colour Palette for actual shade reference.

"The sparrows are preparing for winter, each one dressed in a plain brown coat and singing a cheerful song."

Charles Kuralt, Writer & Journalist





Golden Prairie
8518



Old Brick
8613

Aged Parchment 8523

LIGHT



Pale Portabella
8513



Organic Cotton
8515

Organic Cotton 8515

MEDIUM



Mocha Café
8656



Fashion Ridge
8687

Paper Blanc CW157



Baby Aqua
7507



Julesberg
8563

Balsam Brown 8520



Creased Khaki
7928



Soft Buckskin
8577

Beige Daze CW132

Brown

Brown can evoke as many moods as there are shades. It can be rich and sophisticated, warm and comforting or neutral and secure. Chosen with any combination, brown always stays unaffected by passing fads and styles.



Western Pursuit
8581



Aged Avocado
7783

Arbor Field 7796



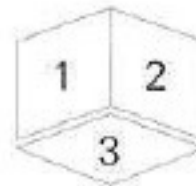
Coffee Connoisseur
8767



Bergamot Orange
2981

Beige Daze CW132

How to use these combinations



The colours 1 and 2 form the basic 2-colour combination as shown in the pictures. These colours are recommended for adjacent surfaces like walls, beams, columns or niches. The 3rd colour is recommended for the rest of the room and/or the ceiling.

"The colour of truth
is grey."

Andre Gide, Novelist





Girgitta
8232



Melita
8111

Winged Angel 8100

LIGHT

MEDIUM



Snowflake Confetti
8300



Wild Honey
7922

Snowflake Confetti 8300

Girgitta
8232



Green Apple Peels
7726

Soft Fern 7732



Aegean Accent
7474



Whispering Smoke
8306

Whispering Smoke 8306

Lida Rose
8206



Wild Mushroom
8472

iced Silver 8236


 In the Dark
8245

 Laureate
8705

Apple White DW106

Grey

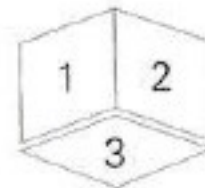
Grey is elegance. Grey brings sophistication and modernity with its presence. Use it with dark shades for bold artistic statements and with light shades for timeless elegance.


 Sunset Mesa
8015

 Castle Dale
8438

Coral Cloud 8019

How to use these combinations



The colours 1 and 2 form the basic 2-colour combination as shown in the pictures. These colours are recommended for adjacent surfaces like walls, beams, columns or niches. The 3rd colour is recommended for the rest of the room and/or the ceiling.



Grey

"Mere colour, unspoiled by meaning and unallied with definite form, can speak to the soul in a thousand different ways."

Oscar Wilde, Playwright



Blue



Red



Blue-Green



Yellow



Green



Brown



Violet



Orange



Pink

Choosing colours made easy



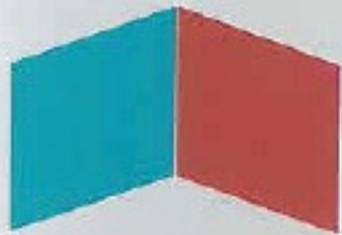
roÿale Luxury Interior Emulsion

With its soft touch and smooth sheen, Berger roÿale brings walls to life with the elegance and feel of exotic fabrics. Combined with the traditional attributes of a superior paint, virtually odourless and specially formulated with carefully selected raw materials, Berger roÿale incorporates Dura-Tuf Technology, making it tough to stain, easy to clean and highly resistant to fungus and algae, whilst maintaining its beauty for 7 years.

roÿale Water-based Luxury Gloss Enamel

For centuries, oil-based enamel has been the professional painters' only choice for painting and trimming wood and metal. Technologically advanced Berger roÿale Water-Based Luxury Gloss Enamel, has now changed the oil paint landscape forever, with comparable performance in flow, levelling, adhesion, print, block and abrasion resistance. As a water-borne formulation, Berger roÿale Water-Based Luxury Gloss Enamel is non-yellowing, low-odour, recoats in 1 hour, and is lead and mercury-free. These unique properties make Berger roÿale Luxury Gloss Enamel, the ideal environmentally-friendly alternative to oil-paint.

For more information, log on to www.bergercaribbean.com



www.bergercaribbean.com

 facebook.com/BergerCaribbean

BARBADOS: 1 (246) 425-9073 • JAMAICA: 1 (876) 923-6226 • TRINIDAD: 1 (868) 623-2231

No part of this book may be reproduced or copied in any form or by any means (graphics, electronic or mechanical, including photocopying, recording, taping or information storage retrieval system) or reproduced in any disc, tape, perforated media or other information storage device, etc., without the written permission of Berger Paints (Caribbean) Ltd. All rights reserved.



Berger Paints Barbados Ltd.

Exmouth Gap, Brandons, St. Michael,
Bridgetown, Barbados, W.I. BB12069
Tel: +1-246-425-9073
Fax: +1-246-228-0866
Email: info@bergeronline.com

Berger Paints Jamaica Ltd.

256 Spanish Town Road,
P.O. Box 8, Kingston 11, Jamaica
Tel: +1-876-923-6226
Fax: +1-876-923-5129
Email: bergerja_marketing@bergeronline.com

Berger Paints Trinidad Ltd.

P.O. Box 546, 11 Concessions Road,
Sea Lots, Port Of Spain, Trinidad
Tel: +1-868-623-2231
Fax: +1-868-623-1682



www.bergercaribbean.com  facebook.com/BergerCaribbean